

## The importance of small archaeological finds from Glasinac

*Aleksandar Jašarević*<sup>1</sup>

Doboj

*Melisa Forić Plasto*<sup>2</sup>

Sarajevo

*Abstract:* This paper presents unpublished finds from the Glasinac area, which became part of the museum's collections in the last couple of years. Most of them are chance finds of pottery and ornaments or finds from small-scale excavations undertaken recently. The large quantity of stratified pottery from the hillfort of Gradac in Sokolac provides a chronological frame for the activities at the site and exhibits a good correlation with the finds from the previously excavated nearby tumulus. Systematic research of the medieval site of Crkvina at Glasinac plain also revealed the existence of an older hillfort settlement dating to the Late Bronze Age. This recent discovery increases the number of the known hillforts in the Glasinac area from 54 to 55. In the vicinity of this site, we discovered a tumulus necropolis, probably connected to the Crkvina hillfort. One of these tumuli was excavated during 2014 campaign and is described in this contribution.

*Key words:* Glasinac, Late Bronze Age, Early Iron Age, hillforts, tumulus

### Introduction

More than one century after the initial discovery, Glasinac is still one of the most important archaeological areas in the Balkans. In some ways, it became a paradigm of Bosnian prehistoric archaeology. Large quantity of material, mainly from burial mounds, challenged archaeological interpretations for many generations. The main focus of research was, and still is, the interpretation of already existing material that come from more than a thousand tumuli. In addition, the archaeological research has been unable to challenge many of the traditional approaches due to a lack of new research and new data.<sup>3</sup> During the

1950s, A. Benac and B. Čović re-examined the Glasinac material from early excavations and created the basic chronological division of the archaeological material into five phases,<sup>4</sup> Glasinac I–V, which, with some additional changes in certain types of objects,<sup>5</sup> is still applied today. In the 1980s, B. Govedarica created a new approach to the study of the material culture of Glasinac with an emphasis placed on the research of the hillforts.<sup>6</sup> With a new methodological approach and in collaboration with other disciplines,<sup>7</sup> the results – at least those that have been published – were extraordinary.<sup>8</sup> This promising research was interrupted with the outbreak of the war in Bosnia and Herzegovina in the early 1990s. After that, research has never continued to the same degree. In spite of the wealth of studies con-

<sup>1</sup> Regional Museum in Doboj, Bosnia and Herzegovina.

<sup>2</sup> Faculty of Philosophy, University of Sarajevo, Bosnia and Herzegovina.

<sup>3</sup> Still, the material from old excavations gives an inexhaustible amount of data, which can be used in new studies of the material culture (e.g., Teržan 1995; Babić 2002, 79–80; Blečić Kavur 2012, 59–60; Blečić Kavur / Pravidur 2012; Jašarević 2015, 39–42; Heilmann 2016, 20–21).

<sup>4</sup> Benac / Čović 1956, 25–38; 1957, 26–54.

<sup>5</sup> Čović 1987b, 582.

<sup>6</sup> Govedarica 1985, 15–24.

<sup>7</sup> Говедарица / Бабић 1992, 56–62.

<sup>8</sup> Kučan 1995; Greenfeld 2005.

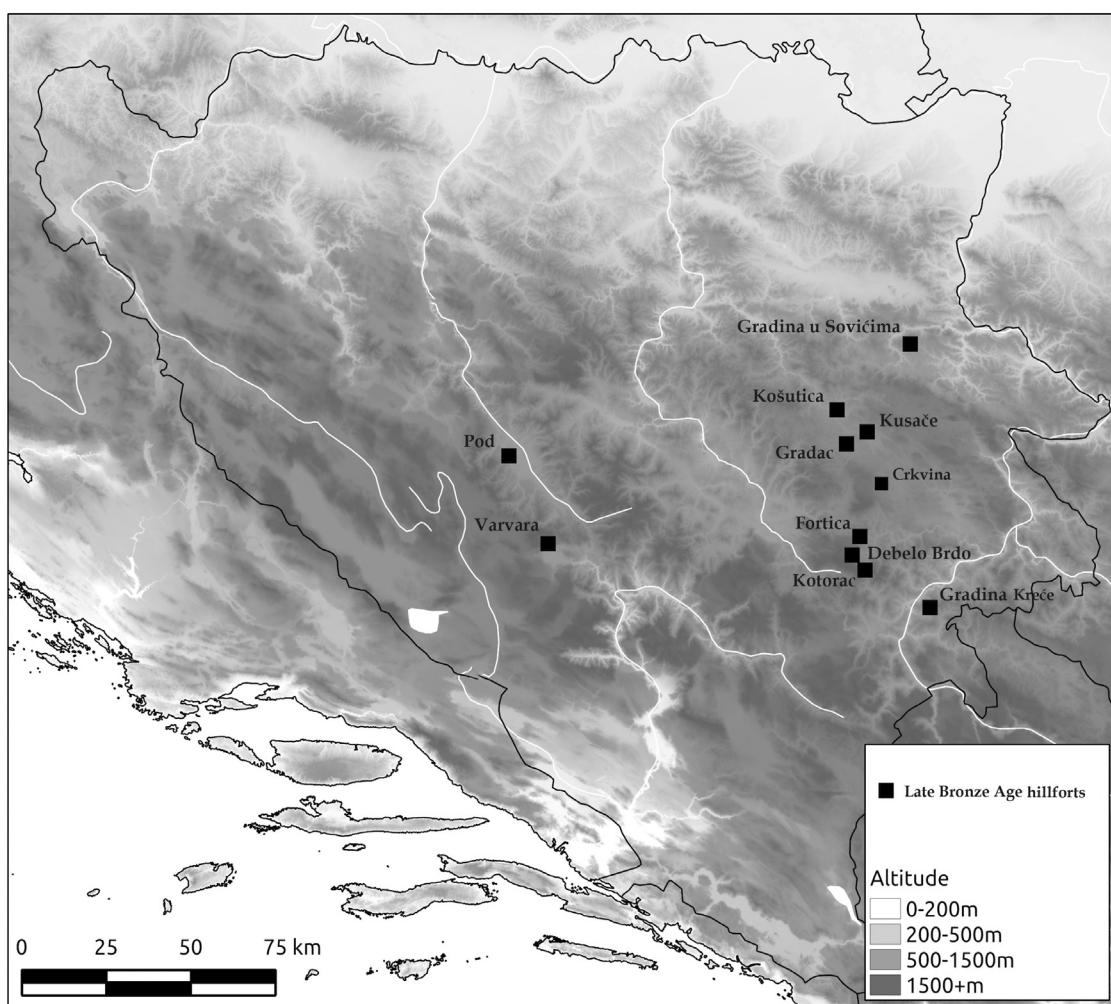


Figure 1: Map showing the Late Bronze Age hillforts mentioned in the text

cerned with the material culture from Glasinac, a great deal is still unknown. This applies in particular to the study of the archaeology of the living. Nevertheless, despite numerous gaps in the earlier research, we have a large database, which can help us with current interpretation.

## Crkvina

During the rescue excavations of the medieval necropolis at the site of Crkvina on the Glasinac plateau in 2013–2014 we were able to detect the existence of older cultural layers dating to the Late Bronze Age (Br D – Ha B).<sup>9</sup> In published reports, this site is known as a large medieval necropolis

with a possible church structure from the same period.<sup>10</sup> The settlement was built on an elongated hilly plateau, loosely connected in its western part to the neighbouring mountain. The plateau is oriented east-west with a clear view of Glasinac plateau and other hillforts in its surroundings. The hillfort can be classified as a so-called lingulate hillfort, according to classification of B. Govedarica.<sup>11</sup> On the eastern and northern sides, there were no traces of fortifications due to the very steep terrain. The fortification wall is likely to have stood on the western and southern sides, where the approach was the easiest. During the Middle Ages, the whole plateau was used as a necropolis and churchyard. Therefore, any trac-

<sup>9</sup> Jašarević / Antić 2017, 225.

<sup>10</sup> Стратимировић 1891, 331–332.

<sup>11</sup> Govedarica 1985, 17.

es of the prehistoric architecture were destroyed. The layers with cultural materials are very thin and disrupted by very deep burial pits that were cut into the bedrock. The central part of the plateau was destroyed during the construction of the medieval church. Despite these unfavourable circumstances, we were able to collect some finds that helped to define the chronology of the site and its cultural stratigraphy. Most of the material comprised the remains of animal bones, mainly small mammals, sheeps and goats. Game was present in small numbers.<sup>12</sup>

Ceramic finds, which are rather fragmentary, are most important for constructing chronology and stratigraphy of the site. A group of diagnostic vessels with a single high round handle attest occupation of the site during the Bronze Age. A major problem that we encountered, however, was the absence of reliable absolute dates and a lack of stratigraphic context for pottery finds from Glasinac. The basic chronological framework for most prehistoric periods in different regions of Bosnia is in most cases based only on the development of pottery styles.<sup>13</sup> Particularly in areas where metal finds are absent or where metals finds are not well preserved, the pottery, as the most common category of finds, serves as a primary source of information.<sup>14</sup> All ceramic material from Glasinac and the surrounding area, however, comes primarily from early excavations without clear descriptions of the stratigraphic context and the relationships to the metal finds. B. Čović discussed this problem in his doctoral dissertation and suggested how to define diagnostic ceramic forms of certain periods.<sup>15</sup> According to his chronology, vessels with a single high round handle (Fig. 2, 3) or a crest handle, sometimes with perforation, date to the Middle or Late Bronze Age.<sup>16</sup> This is one of the common ceramic types at the Glasinac hillfort and at hillforts around the Glasinac area.<sup>17</sup> The same pottery can be found at sites of Kusače,<sup>18</sup>

Debelo Brdo,<sup>19</sup> Soukbunar,<sup>20</sup> and Fortica.<sup>21</sup> According to the B. Čović's revised chronology, this type of pottery dates Phase Glasinac IIIa-b, although the shapes occurred throughout all phases of Late Bronze Age.<sup>22</sup> In Gradina in Sovići this type of handles is typical for the second phase of this settlement,<sup>23</sup> which can be dated broadly from the Middle to the Late Bronze Age.<sup>24</sup> Pottery from Gradina in Kreće has been dated to the same period based on the comparison with the abovementioned sites.<sup>25</sup> More precise dating has been provided by M. Gavranović. According to him, the dating between the 14<sup>th</sup> and the 12<sup>th</sup> century BC (corresponding to the Debelo Brdo Phase B-C) can be proposed.<sup>26</sup> Same pottery type from sites like Prispu near Livno in Western Bosnia has also been dated to the end of the Middle Bronze Age and the Late Bronze Age.<sup>27</sup>

One of the pottery shapes from Crkvina that were partially reconstructed are bowls with flat-cut wide rims. This type occurs over a wide territory and had a long tradition of use.<sup>28</sup> At Varvara, they were found associated with Phases B and C1,<sup>29</sup> while at Pod near Bugojno they were characteristic of Phase B and often had decorated rims.<sup>30</sup> Finds from Debelo Brdo have been dated to the same period.<sup>31</sup> In the Glasinac area, bowls of this type belong to Phases Glasinac IIIa-b.<sup>32</sup>

During fieldwork in 2014 we were able to locate a necropolis with tumuli in Crkvina, which is probably directly related to settlement on the plateau, located some 500 m to the east. About 10 tumuli of different diameter and height are located at the site. This broad meadow on a hill slope does not have a specific name and the site is usually called Brdo above Crkvina. Most of the tumuli are relatively small, around 5 m in diameter and around 1 m in height. The largest tumulus

<sup>12</sup> We wish to express our gratitude to dr. sc. Jelena Bula-tović from the Laboratory for Bioarchaeology at Belgrade University for conducting preliminary osteoarchaeological analysis.

<sup>13</sup> Čović 1965b, 35–39; Gavranović 2011, 40–111.

<sup>14</sup> Horejs 2010, 15.

<sup>15</sup> Čović 1965b, 78–79.

<sup>16</sup> *Ibid.* 79.

<sup>17</sup> *Ibid.* 79; 1983c, 431.

<sup>18</sup> *Ibid.*, Tab. XXII, 2–4.

<sup>19</sup> Fiala 1894, 109, Tab. I, 4, 6; Čović 1965, Tab. XX, 4.

<sup>20</sup> Čović 1965, Tab. XX, 6.

<sup>21</sup> *Ibid.*, Tab. XIX, 6.

<sup>22</sup> Čović 1983c, 422.

<sup>23</sup> Kosorić 1983, 78, Tab. VII, 6.

<sup>24</sup> *Ibid.* 81.

<sup>25</sup> Косорић 1994, 11–12 Tab. II, 26. III, 34.

<sup>26</sup> Gavranović 2011, 27. Teil 2.

<sup>27</sup> Marijan 1995, 39. 42.

<sup>28</sup> Čović 1965b, 79.

<sup>29</sup> *Ibid.* 79; Gavranović 2011, 188, Teil 2.

<sup>30</sup> Čović 1965b, 79; Gavranović 2011, 99, Abb. 127, Teil 2.

<sup>31</sup> Čović 1965b, 79, Tab. XX, 14–15.

<sup>32</sup> Čović 1983c, 423.

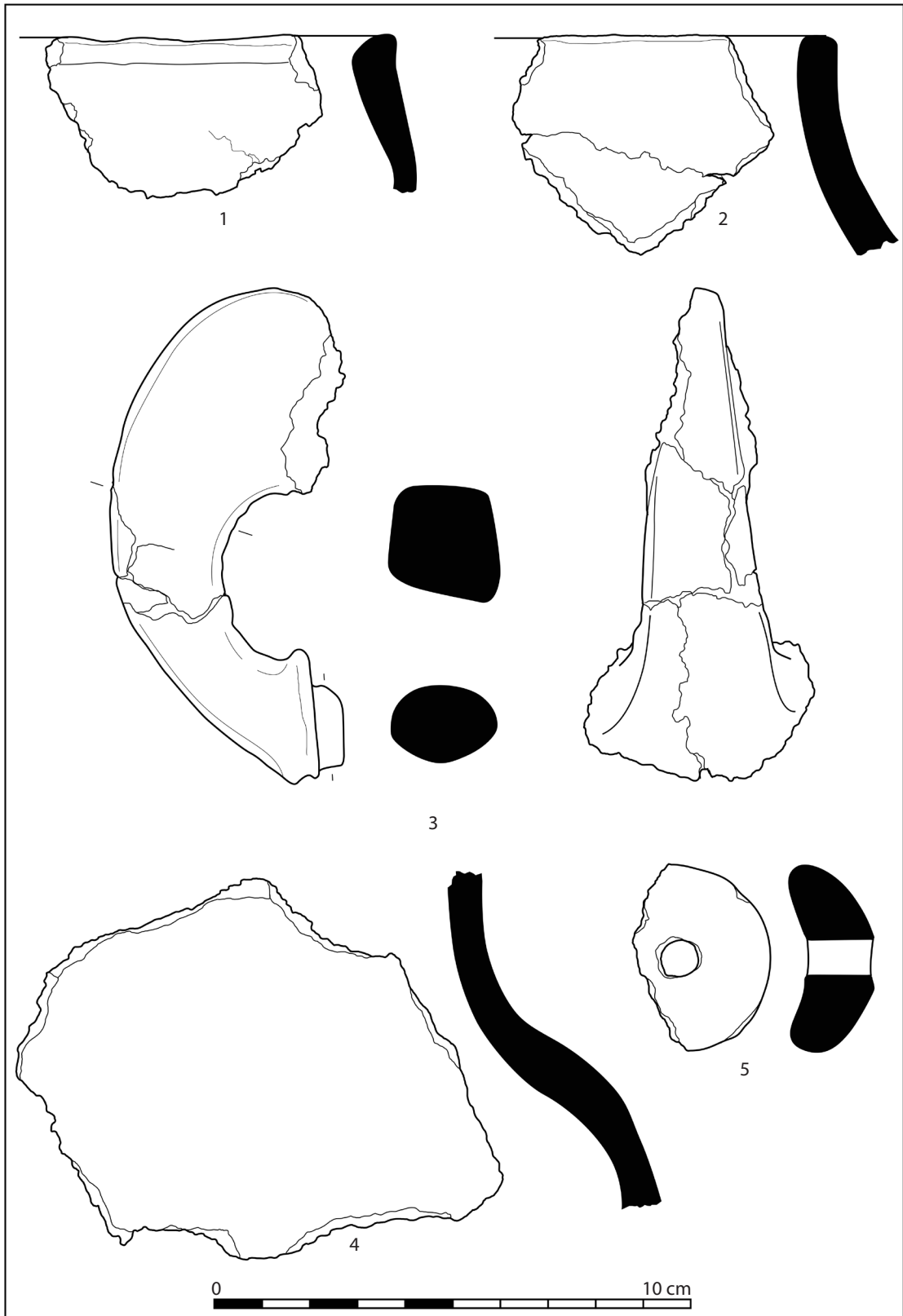


Figure 2: Pottery fragments from the Crkvina hillfort

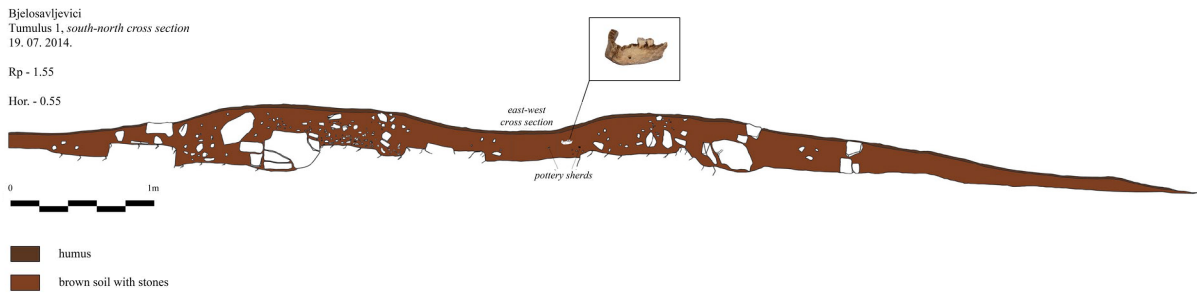


Figure 3: Cross-section of Tumulus I, Crkvina

was located on the west side of the necropolis. It had a diameter of 12–13 m and preserved height up to 1 m. This is the only tumulus at the necropolis that has been excavated during the 2014 campaign.

The tumulus was formed from earth and stone, with no traces of any funerary construction. It is interesting that the naturally elevated terrain was selected for the erection of the tumulus, as it added an appearance of a bigger and higher construction. Under the upper layer of the tumulus, almost at its centre, a part of a human mandible and small fragments of human bones were found (Figure 3). The remains were piled up together with fragments of pottery and animal bones. The concentration of the finds shows that it is not a regular, or normative, burial similar to that found in the other excavated tumuli in Glasinac.<sup>33</sup> There was no trace of cremation on the bones, but we cannot confirm an inhumation burial either, as the bones were not in an anatomical position. We further do not know whether the deceased was placed in some sort of a burial pit.

Fragments of pottery and animal bones were also found scattered in this central area. Because of fragmentation, it is impossible to reconstruct precisely the form of the vessels. Based on the composition and small details of design, we can confirm that they are prehistoric, most likely a beaker with two handles and several bowls with slightly cut rims (Figure 4), which we encountered also in the Late Bronze and Early Iron Age phases at Glasinac.<sup>34</sup> Therefore, to sum up, the finds of dislocated human bones mixed with ceramics and animal bones suggest that it is a secondary burial, or perhaps the remnants of some kind of a ritual activity, which took place in the Late Bronze Age or Early Iron Age. Alternatively,

the form of these remains may simply be due to a damage caused by looting of the tumuli in the ancient times.

The necropolis near Crkvina has been known since F. Fiala excavated four tumuli at this location in 1895.<sup>35</sup> Three excavated tumuli were empty, while the fourth, which was the largest, contained burnt bones and dislocated remains of the deceased. In this Tumulus IV, Fiala found fragments of iron knives, bronze tweezers, a fragment of probably some kind of boat-shaped fibula, an amber bead, and pottery sherds.<sup>36</sup> It is thus interesting that in both cases, the larger Crkvina tumuli yielded dislocated remains of the deceased.

## Gradac, Sokolac

Over the last few years, the Museum in Doboj received a collection of pottery from the site of Gradac in Sokolac.<sup>37</sup> These finds are important not because of their quantity, but because of the variety of individual pottery shapes. Gradac has been known for a long time as the place where Ć. Truhelka began his archaeological excavations on the Glasinac plateau.<sup>38</sup> His interest focused on the excavation of tumuli around the hillfort of Gradac. Much of the central part of the prehistoric settlement had been destroyed by the construction of the Church of St. Elijah in the late 19<sup>th</sup> century and by the levelling of the surrounding terrain for outbuildings and an access road to the churchyard.<sup>39</sup> The site is located on a small

<sup>33</sup> Čović 1959, 78–79; Govedarica 1978, 28–30.

<sup>34</sup> Čović 1983c, 422–423; Čović 1987b, 590.

<sup>35</sup> Fiala 1895, 552–553.

<sup>36</sup> Ibid. 553.

<sup>37</sup> They were donated by a local priest, who had gathered them from the area of modern cemetery around the church in Sokolac.

<sup>38</sup> Truhelka 1889, 25–26.

<sup>39</sup> Truhelka 1891, 309; Čović 1965a, 57; Govedarica 1985, 18.

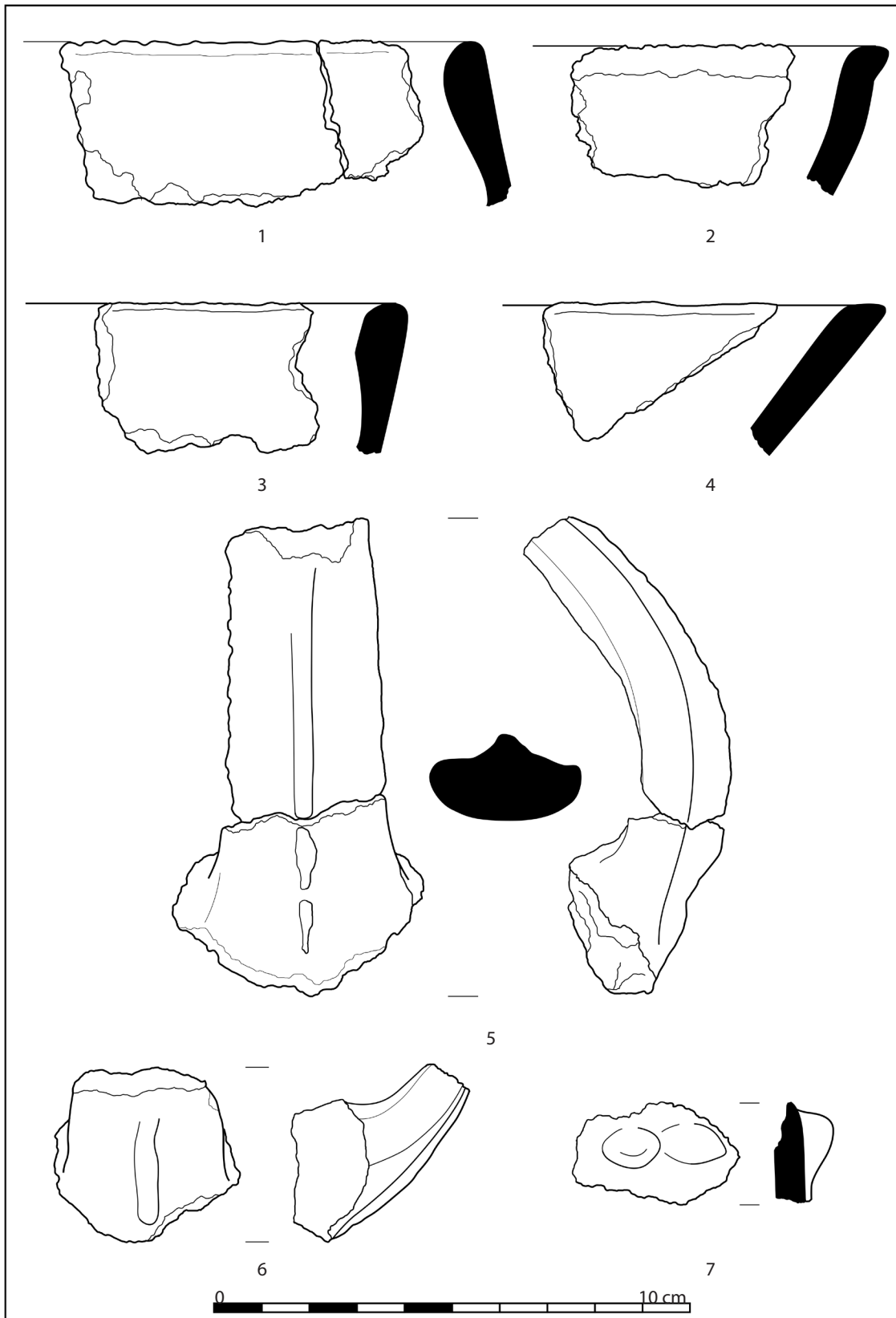


Figure 4: Pottery fragments from Tumulus I, Crkvina



natural rise and strategically dominates over the valley of River Rešetnica and the western part of the Glasinac plateau. The north and east side of the hillfort is rocky with a steep descent towards the river.<sup>40</sup> The other two sides of the settlement were probably fortified by a stone wall. The collection of pottery finds at the museum comes either from the area of the modern cemetery or from the east side of Gradac hillfort.<sup>41</sup>

Most pottery collected from Gradac in Sokolac contains fragments of handles and rims belonging to different type of bowls and cups. Among the chronologically diagnostic objects are finds of high rounded handles with perforation (Tab. 1, 1). Handles of the same type were found at hillfort of Kusače as well.<sup>42</sup> Due to a lack of metal finds from Kusače comparable with those from the Glasinac area, the pottery was dated very widely from the end of the Middle Bronze Age throughout the Late Bronze Age.<sup>43</sup> In his revised chronology, B. Čović dated the material from Kusače to phases Glasinac II-Ia-b, although it could span all phases of the Late Bronze Age.<sup>44</sup>

Two handles from Gradac are the so-called small crested handles (Tab. 1, 2, 5). In addition to the Glasinac area, they were found in the ceramic assemblages from sites of Gradina in Sovići<sup>45</sup> and Gradina in Kreće.<sup>46</sup> Usually, they are characteristic of hillfort settlements around Sarajevo. Similar finds from Debelo Brdo,<sup>47</sup> Fortica,<sup>48</sup> and Kotorac<sup>49</sup> are all dated to Debelo Brdo Phase C (12<sup>th</sup> to 9<sup>th</sup> century BC).<sup>50</sup> According to A. Benac, pottery with small crested handles from Kotorac can be dated between the 9<sup>th</sup> and the 8<sup>th</sup> century BC,<sup>51</sup> as it was found together with handles of the *ansa bifora* type.<sup>52</sup> This type of handles occurs also in Varvara Phase C-2 (Ha A1), but finds

from Glasinac and Sarajevo area date apparently somewhat later.<sup>53</sup>

More precise dating can be offered by drawing on the stratigraphy of the settlement of Pod near Bugojno. Bowls with small vertical extension on the handles, seen in the ceramic repertoire from Gradac in Sokolac (Tab. 1, 4), are characteristic of Phase Pod B or Hallstatt B1-B2 of the Central European periodisation.<sup>54</sup> More specifically, two ceramic types found in Gradac also appear in Phase Pod B. First is a fragment of a bowl with a faceted rim (Tab. 2, 1). Although it is quite typical of the ceramic material of this period from Central Bosnia,<sup>55</sup> it is the first such find from Glasinac. The bowls emerged under the influence of the Urnfield culture from the southern edge of the Pannonian Plain, and became one of the favourite ceramic types in a wide area of Northern and Central Bosnia.<sup>56</sup> In the late stages of the Late Bronze Age, they occur in far wider territory. According to B. Čović, it is likely that such a wide distribution was influenced by the exchange with the settlements from Central Bosnia.<sup>57</sup> Therefore, it is not a surprise that the same type of bowl with a faceted rim was found at the hillfort of Korita in Southwestern Bosnia.<sup>58</sup> Furthermore, there is no doubt that the influence from Central Bosnia, and particularly from the region around the Sarajevo plain, was strongly felt at Glasinac in terms of the selection of ceramic forms and their local production.<sup>59</sup> This is supported by a discovery of a bowl from Gradac with one horizontal plastic strip modelled around its body and a vertical strip modelled from its rim to its body, in addition to decoration of zigzag lines (Tab. 2, 2). The same bowl was found at Debelo Brdo and was dated to Debelo Brdo Phase C.<sup>60</sup>

In conclusion it can be stated that the chronologically diagnostic pottery pieces from Gradac point to the occupation of this site during the advanced stages of Late Bronze Age.

<sup>40</sup> Truhelka 1889, 25; Čović 1965a, 57.

<sup>41</sup> All findings come from a modern burial pit.

<sup>42</sup> Čović 1965b, Tab. XXII, 3; 1983c, 422.

<sup>43</sup> Čović 1965b, 79-80.

<sup>44</sup> Čović 1983c, 422.

<sup>45</sup> Kosorić 1983, 78.

<sup>46</sup> Косопић 1994, 11.

<sup>47</sup> Fiala 1894, 109; Gavranović 2011, 27, Teil 2.

<sup>48</sup> Čurčić 1908, 377.

<sup>49</sup> Korošec 1940, 77-82.

<sup>50</sup> Gavranović 2011, 27, Teil 2.

<sup>51</sup> Benac 1963, 29-30.

<sup>52</sup> Gavranović 2011, 27, Teil 2.

<sup>53</sup> Čović 1983c, 422.

<sup>54</sup> Čović 1965b, 51; Gavranović 2011, 98, Teil 2.

<sup>55</sup> Gavranović 2011.

<sup>56</sup> Ibid. 47.

<sup>57</sup> Čović 1965b, 87; Govedarica 1982, 176.

<sup>58</sup> Govedarica 1982, 177, Tab. XI, 11.

<sup>59</sup> Čović 1983b, 404, 406.

<sup>60</sup> Fiala 1894, 110, Tab. III, 3; Gavranović 2011, 27-28, Teil 2.

## Čajniče

The archaeological collection of the Tolisa Franciscan Monastery Museum holds an interesting find from the area of Eastern Bosnia.<sup>61</sup> According to the museum inventory, a bronze fibula from the vicinity of the town of Čajniče is a chance find gifted to the monastery from an unknown donor. The fibula belongs to the widespread type of boat-shaped Rusanovići type fibula, as identified by B. Teržan.<sup>62</sup> The fibula has a boat-shaped full cast bow with a small horizontal crest at the top with two lines of perforated dots and with a trapezoidal foot with vertical shallow grooves at each end. Part of the foot is damaged and only a section of the ring is preserved. The ring is decorated with hanging pendants characteristic for this type of fibula (Figure 6, 1).

According to B. Teržan, the boat-shaped Rusanovići type fibulae originated from the South-eastern Alpine boat-shape fibulae of the so-called Šmarjeta type.<sup>63</sup> On the Glasinac plateau, however, they received various innovative designs and forms,<sup>64</sup> and became part of a recognizable local fashion.<sup>65</sup> Comparative examples to this type of fibulae are numerous, especially in the Glasinac area, but they also appear widely in the adjacent region of Western Serbia (Figure 5).<sup>66</sup> Bronze fibulae of this type can be found in female graves, often as part of rich attire, as for example in Grave 1 at Karagač,<sup>67</sup> but some examples are also known from male graves, such as Grave LXXXX-IV/1 at Rusanovići.<sup>68</sup> Fibulae of Rusanovići type occur both in pairs and individually as well as in association with other types of fibulae. The most common combination is with the so-called spectacle fibulae, double-looped bow fibulae with Boeotian shield plate and with a characteristic “V” ornament, double-looped bow fibulae with rectangular foot and two symmetrical holes, and

different forms of single-looped bow fibulae with a trapezoidal foot.<sup>69</sup>

The beginning of the use of this fibula at Glasinac is well documented from Rusanovići Grave LXXXXIV/1, which gave the object its name.<sup>70</sup> According to B. Čović, these fibulae are one of the main characteristics of Glasinac Phase IVc-2.<sup>71</sup> Their use was not just limited to the 6<sup>th</sup> century BC, but they also occurred during the first decades of the 5<sup>th</sup> century BC.<sup>72</sup> At Donja Dolina, they were used during Phase 2b (6<sup>th</sup> century BC),<sup>73</sup> along with other forms of boat-shaped fibulae. A fibula from Tolisa can be classified as a specific variant of fibulae with trapezoidal foot, according to the typology of N. Lucentini.<sup>74</sup> The main characteristic of this variant is a prominent crest on the bow. Comparative examples are known from graves at Gosinja (Grave XXIII/6),<sup>75</sup> Plješevica (Grave III),<sup>76</sup> and Okruglo (Grave III/1),<sup>77</sup> all belonging to Glasinac Phase IVc-2. Fibulae of this type are often decorated with pendants and almost exclusively with three rings. Comparative examples can be found in assemblages from Plješevica (Tumulus III),<sup>78</sup> Okruglo (Grave III/1),<sup>79</sup> Brankovići (Grave II/3),<sup>80</sup> Osovo (Grave XXIII),<sup>81</sup> all in the area of Glasinac, and furthermore from Karagač (Kosovo),<sup>82</sup> Godljevo,<sup>83</sup> Kriva Reka,<sup>84</sup> and Kosjerić<sup>85</sup> in Western Serbia. Individual finds of Rusanovići type fibulae from Donja Dolina in Posavina and Banoštor in Srem provide the limit of their distribution in the north, while finds from Ljubuški and Ljubomir in Herzegovina and Shtoj in Northern Albania

<sup>61</sup> The authors would like to thank Pero Matkić from the Tolisa Franciscan Monastery Museum for the access to and information about the material.

<sup>62</sup> Teržan 1987, 19.

<sup>63</sup> Ibid.; Gavranović 2011, 195.

<sup>64</sup> Vasić 1999, 91.

<sup>65</sup> Васић 2004, 42-43.

<sup>66</sup> Vasić 1999, 90.

<sup>67</sup> Srejšević 1973, 55, Pl. IV-V.

<sup>68</sup> Benac / Čović 1957, Tab. XXV, Fig. 1-7.

<sup>69</sup> Vasić 1999, 91; Heilmann 2016, 16.

<sup>70</sup> Benac, Čović 1957, Tab. XXV, Fig. 1-7; Teržan 1987, 19.

<sup>71</sup> Čović 1987b, 619; Vasić 1999, 91; Gavranović 2011, 195.

<sup>72</sup> Vasić 1999, 91.

<sup>73</sup> Marić 1964, 39; Čović 1987a, 246.

<sup>74</sup> “Fibula con staffa ad anello terminale ed arco crestato” (Lucentini 1981, 75).

<sup>75</sup> Lucentini 1981, Tab. V, 15. 17.

<sup>76</sup> Fiala 1895, 541.

<sup>77</sup> Lucentini 1981, Tab. X, 5.

<sup>78</sup> Fiala 1895, 541.

<sup>79</sup> Lucentini 1981, Tab. X, 5.

<sup>80</sup> Ibid., Tab. I, 20.

<sup>81</sup> Fiala 1895, 558.

<sup>82</sup> Srejšević 1973, 55, Pl. IV-V; Vasić 1999, 90, Tab. 44, 672-673.

<sup>83</sup> Zotović 1985, 76; Vasić 1999, 90, Tab. 44, 667.

<sup>84</sup> Гарашанин 1967, 47, Fig. 11.

<sup>85</sup> Булић 2016, 195.



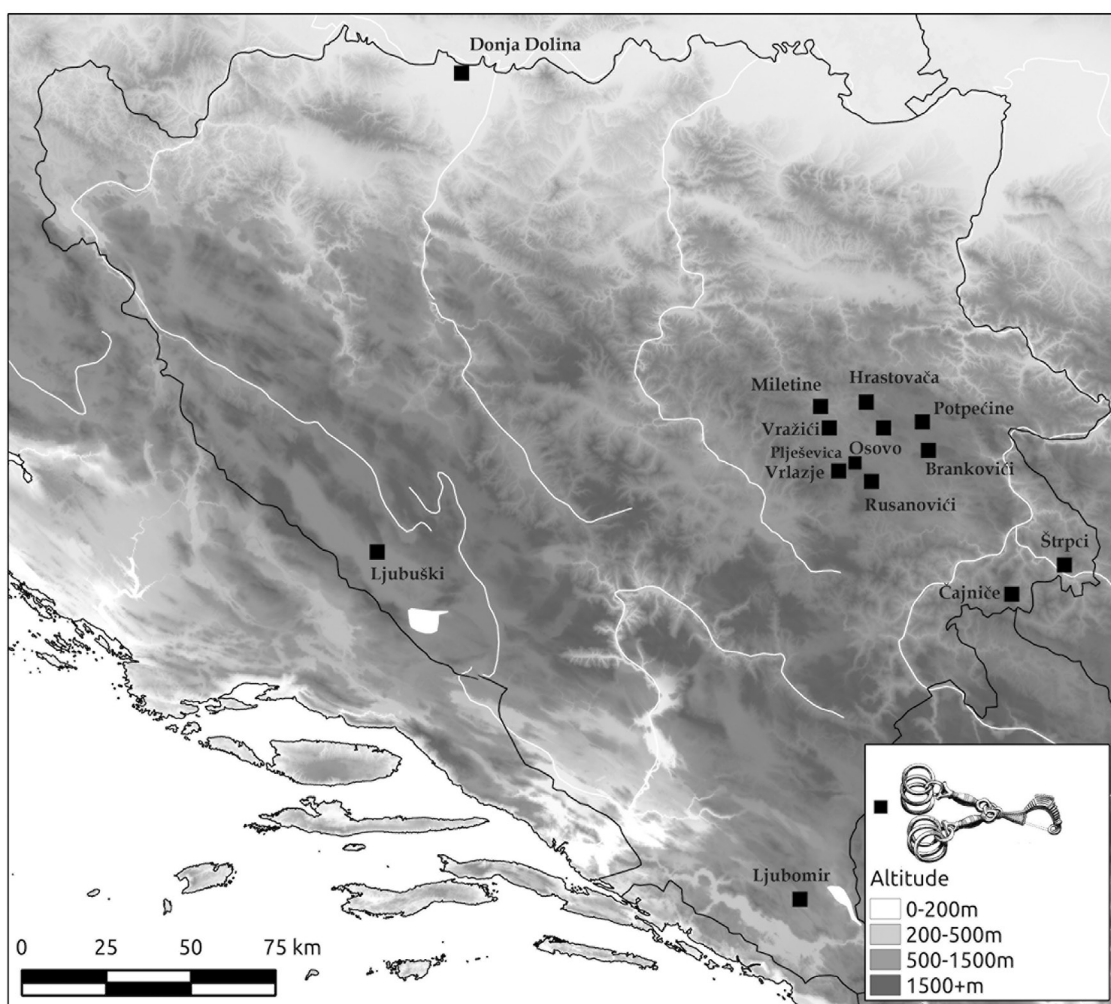


Figure 5: *Distribution map of Rusanovići type fibulae* (modified after Teržan 1987; Vasić 1999)

represent their southern boundary of distribution in the Balkans.<sup>86</sup>

## Pećina pod lipom

One of the few objects that came from Glasinac in the last few decades is a fibula from the rock shelter site of Pećina pod lipom, near the site of Kadića brdo. Pećina pod lipom is primarily known as a complex Paleolithic site, with a thick cultural layer dating to the later Prehistoric and historical periods.<sup>87</sup> The bronze fibula was found during archaeological excavation in 2015 in the

part of the site named Abri II.<sup>88</sup> The fibula belongs to the group of bronze crossbow Certosa type fibulae, variant XIII, according to B. Teržan.<sup>89</sup> Construction of the preserved piece consists of a leaf-shaped bow, but it lacks a foot, one spiral coil and a part of a separate rectangular construction that is attached with its lateral ends to the ends of the spiral coil (Figure 6, 2). The closest analogy of the type XIII fibula has been documented at Čavarine (tumuli II and IV) at Glasinac, dated to Glasinac Phase Va.<sup>90</sup>

<sup>86</sup> Vasić 1989, 104; 1999, 92; Gavranović 2011, 195.

<sup>87</sup> Kujundžić-Vejzagić 2001, 39.

<sup>88</sup> Results of the archaeological research have not been published. Material is stored in the Regional Museum in Doboj.

<sup>89</sup> Teržan 1976, 380; Vasić 1999, 101.

<sup>90</sup> Fiala 1892, 412; Teržan 1976, 378; Čović 1987b, 631, Pl LXIV, 13.

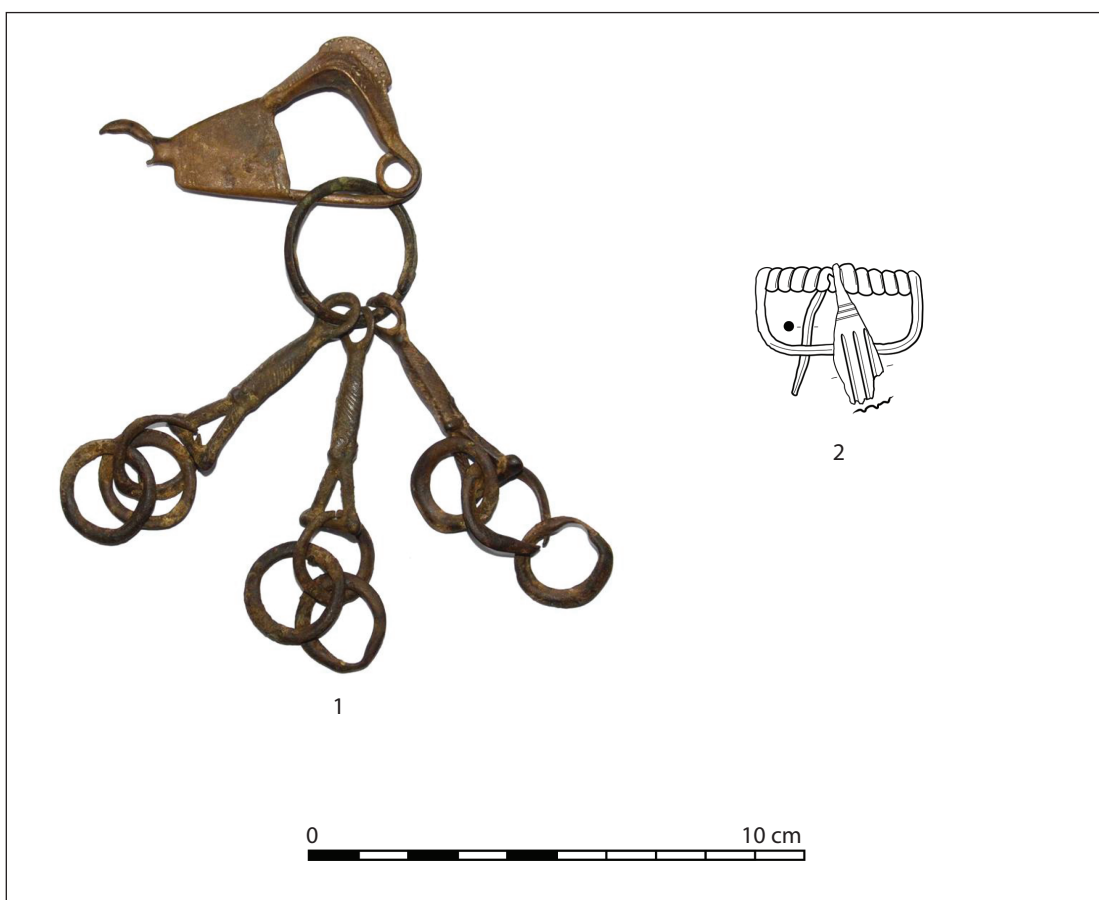


Figure 6: *Fibulae from 1. Čajniče; 2. Pećina pod lipom*

This type of fibulae demonstrates cultural links between the territories of Glasinac, Northern Bosnia, and Slavonia with the Eastern Alpine, Transdanubian, and Danubian cultural circles,<sup>91</sup> undoubtedly along the so-called Posavina Corridor. These fibulae are more specific for the territory of Donja Dolina and Sanski Most cultural complex, where they were often discovered as part of grave goods of Phase 3b (the second half of the 5<sup>th</sup> century BC).<sup>92</sup> At graveyards in Donja Dolina and Sanski Most, several varieties of Certosa type XIII have been found as products of local workshops, most probably inspired by foreign models.<sup>93</sup> They became a recognizable element of fashion in the 5<sup>th</sup> and 4<sup>th</sup> century BC

and were found mostly in female, but were also known from male, graves.<sup>94</sup>

This is also confirmed by the discovery of numerous fibulae of the same type from the Szentlőrinc cemetery in Hungary, where various types of Certosa type XIII fibulae appeared in many female graves.<sup>95</sup> Bronze fibulae of this type have also been recorded in the region of Sarmia, at sites such as Zemun, Adeševci, Sotin, Sremska Mitrovica, as well as in female graves from Indija and probably Nočaj.<sup>96</sup> Two fibulae of the same type have also been found in the well-documented female grave G-2 at Beljnjača near Šid.<sup>97</sup>

The distribution of Certosa type XIII fibulae south of the Posavina region can be traced in the

<sup>91</sup> Teržan 1976, 380.

<sup>92</sup> Čović 1987a, 262; Jašarević 2017, 11–12.

<sup>93</sup> The best example is the emergence of Certosa XIIIh type (Fiala 1896, 236, 261; Truhelka 1902, 263–264, 520; Teržan 1976, 380; Čović 1987a, 262; Dizdar 2015, 47).

<sup>94</sup> At Čarakovo cemetery, a fibula type XIII was found in a male warrior Grave 3 (Čović 1956, 188).

<sup>95</sup> Jerem 1968, 184–189.

<sup>96</sup> Vasić 1999, 101–102; Dizdar 2015, 46–47.

<sup>97</sup> Коледин 2012, 109.

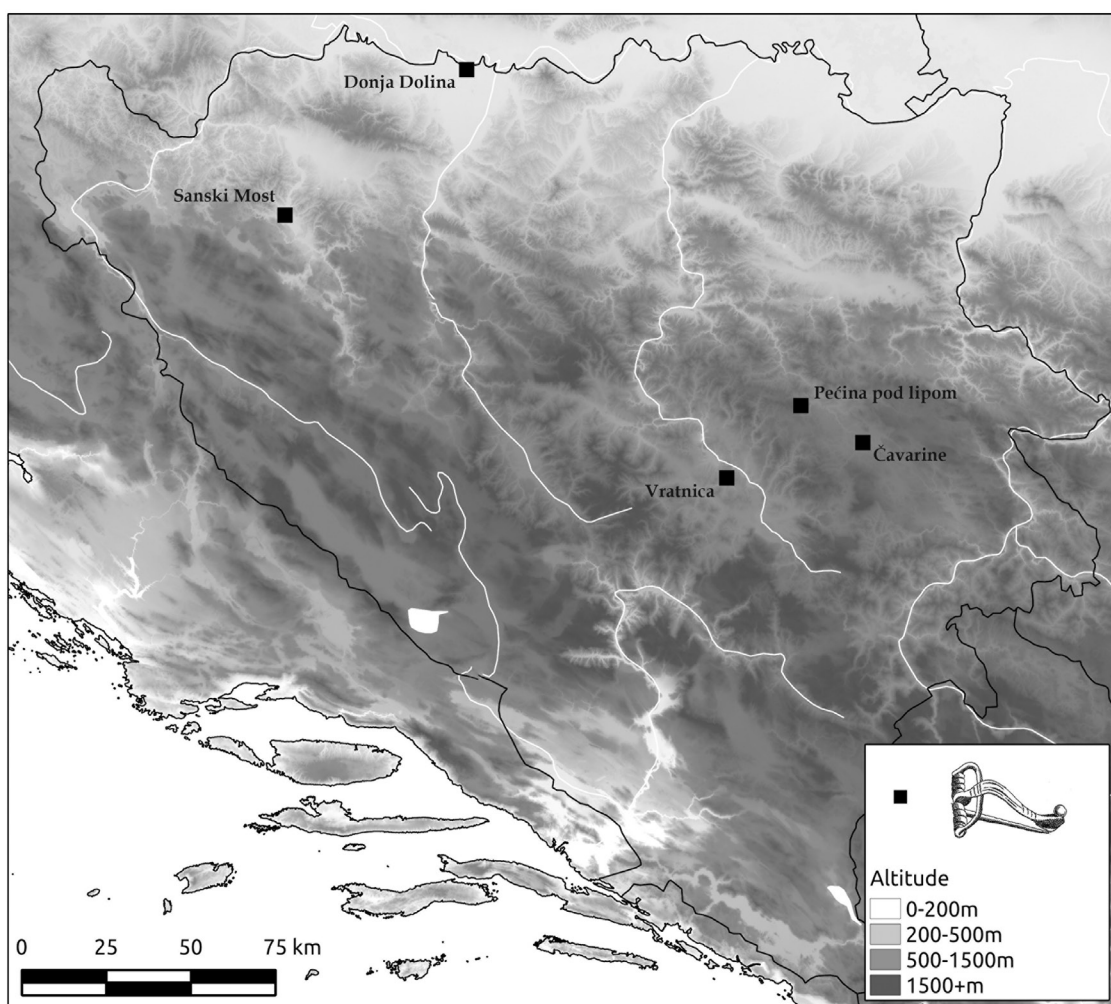


Figure 7: *Distribution map of the Certosa type fibulae variant XIII*  
(extended, after Teržan 1976; Vasić 1999; Dizdar 2015)

valley of the River Bosna, a well-known prehistoric communication corridor (Figure 7). This is testified by the finds from the Vratnica tumulus near Visoko in Bosna Basin between Visoko and Sarajevo.<sup>98</sup>

Certosa fibulae with a crossbow construction begin to appear during the second half of the 5<sup>th</sup> century and continue in the 4<sup>th</sup> century BC.<sup>99</sup> Certosa fibula from Pećina pod lipom can most likely be associated with a nearby hilltop settlement of Kadića brdo with a documented Late Iron Age occupation.<sup>100</sup>

<sup>98</sup> Čović 1984, 43; 1987c, 504–505.

<sup>99</sup> Vasić 1999, 101–102; Dizdar 2015, 47.

<sup>100</sup> Govedarica 1990, 86–88.

## Conclusion

After more than a century since the discovery of Glasinac and the initial suggestion that it is some kind of a *sacrum Illyricum*, many generations of archaeologists have worked on the deconstruction of the myth of Glasinac as an exclusive place of death. The number of known tumuli is actually not as great as initially thought, and all the necropolises can be linked to nearby hillforts.<sup>101</sup> Still, the number of investigated tumuli, 1234 in total, is impressive. It has provided a large database of materials from different prehistoric periods, which ultimately resulted in the

<sup>101</sup> Govedarica 1978, 32; 1985, 16–17; Čović 1987b, 578; Vasić 2003, 7–8; Jašarević 2015, 42.

definition of the Glasinac cultural complex.<sup>102</sup> The study of the material culture from the tumuli has always been the focus of research at Glasinac ever since the first basic systematisation of materials by A. Benac and B. Čović in 1956–1957.<sup>103</sup> In the end, this has created a problem how to link the places of the living with the places of the burials. Chronological and cultural sequence of settlements in the Glasinac area is poorly documented,<sup>104</sup> and we have not been able to compare periodisation based on grave finds with the material remains from the hillforts. Primarily, this issue refers to pottery, which is usually the most common find, and which gives us the most information about the way of life, traditions, influences, and innovation.

Finds of fibulae from Čajniče and Pećina pod lipom are both chance finds lacking stratigraphic context, but they nonetheless provide some information about the influences that reached Glasinac especially during the final stages of the Early Iron Age. Archaeologically most visible innovations in Glasinac come from the Early Iron Age, when foreign elements were adopted and either integrated into the prevailing local cultural code or transformed and adjusted to fit local needs.<sup>105</sup>

The ceramic finds from Gradac in Sokolac provide a little insight into the ceramic spectrum in Glasinac. Typologically most sensitive finds link this spectrum to assemblages from hillforts around the Sarajevo plain, such as Debelo Brdo, Fortica, and Kotorac. In fact, this is not too surprising. If we look at the metal finds, especially ornaments (for example, belts of the Mramorac type) from the tumuli in Glasinac and the finds from the abovementioned hillforts,<sup>106</sup> we can see a connection that was active throughout the Early Iron Age. The similarities in the ceramic repertoire are also evident in assemblages from the hillforts at Gradina in Sovići and Gradina in Kreće, which show a rather uniform tradition that was not only characteristic of the inner circle of Glasinac hillforts, but of a broader cultural area.

Na engleski jezik preveo Aleksandar Jašarević

<sup>102</sup> Čović 1987b, 579–580.

<sup>103</sup> Benac / Čović 1956; 1957; Heilmann 2016, 20–21.

<sup>104</sup> Govedarica 1985.

<sup>105</sup> Heilmann 2016, 21.

<sup>106</sup> Fiala 1894, 120.

## Važnost malih arheoloških nalaza sa Glasinca

U ovom se radu predstavljaju neobjavljeni nalazi sa područja Glasinca, koji su posljednjih nekoliko godina postali dio različitih muzejskih zbirki. Većina od njih su slučajni nalazi keramike i sitnih ornamenata, ili je pak riječ o nalazima koji dolaze sa arheoloških iskopavanja u posljednjih nekoliko godina. Velika količina keramike sa lokaliteta Gradac u Sokocu daje hronološki okvir za naseobinske aktivnosti i pokazuje dobru korelaciju s nalazima sa prethodno iskopanih okolnih tumula. Sistematska istraživanje srednjovjekovnog lokaliteta Crkvina na Glasinačkom polju otkrilo je i postojanje starije faze naseljavanja iz perioda kasnog bronzanog doba. Ovo nedavno otkriće povećava broj poznatih gradina na području Glasinca. U blizini ovoga lokaliteta otkrivena je i nekropola pod tumulima, vjerovatno povezanu s gradinskim naseljem na Crkvini. Jedan od tih tumula iskopan je tokom kampanje 2014. godine i opisan je u ovom radu.

Lokalitet Crkvina lociran je na istoimenom brdu uz magistralni put Sokolac–Rogatica u selu Bjelosavljevići u zapadnom dijelu Glasinačkog polja na koti 865. m n. v. Lokalitet ima dominantnu poziciju i vidljivu komunikaciju nad čitavim prostorom Glasinačkog polja. Prilaz je moguć sa istočne i južne strane, dok strm i oštar usjek u brdu sa sjevera i zapada nije dopuštao lak prilaz lokalitetu. Nivelacija terena djelimično je urađena tokom kasnog bronzanog doba kada je na platou formirano gradinsko naselje. Ostaci keramike i životinjskih kostiju iz ovoga perioda pronađeni su u slojevima nasipa oko srednjovjekovne crkve i pri iskopavanju grobova ispod stećaka. Najveći dio praistorijskog naselja uništen je intenzivnim sahranjivanjem i gradnjom srednjovjekovne crkve. Keramički nalazi, koji su prilično fragmentarni, najvažnija su kategorija za hronološko opredjeljenje i stratigrafiju lokaliteta.

Skupina dijagnostičkih posuda sa visokom okruglom, krestastom, ručkom potvrđuje naseljavanje tokom kasnog bronzanog doba. Osnovni hronološki okvir za većinu praistorijskih razdoblja u različitim dijelovima Bosne najviše se temelji samo na razvoju keramičkih stilova. Posebno u područjima gdje nema metalnih nalaza ili gdje metalni nalazi nisu dobro očuvani. Keramika, kao najčešća kategorija nalaza, služi kao primarni izvor informacija. Cjelokupan keramički materijal sa Glasinca i okolice, međutim, dolaze prvenstveno sa ranih iskopavanja bez preciznih stratigrafskih detalja i odnosa sa metalnim nalazima. B. Čović raspravljao je o ovom problemu u svojoj doktorskoj disertaciji i predložio kako definirati dijagno-



stičke keramičke oblike određenih razdoblja. Prema njegovoj hronologiji, posude sa visokom okruglom, krestastom, ručkom, ponekad sa perforacijom, datuje se u srednje ili kasno bronzano doba. To je jedan od uobičajenih keramičkih tipova na gradinama sa Glasinca i na gradinama oko Glasinca. Ista keramika može se naći na lokalitetima Kusače, Debelo Brdo, Soukbunar i Fortica. Prema revidiranoj hronologiji B. Čovića, ova vrsta keramike datira iz faze Glasinac IIIa-b. Preciznije datiranje pruža tipologija M. Gavranovića koji nalaze datuje između 14. i 12. vijeka BC (što odgovara fazi Debelo Brdo B-C). Ista vrsta keramike iz mjesta Prispu kod Livna u zapadnoj Bosni također je datirana od kraja srednjeg bronzanog doba i u kasnog bronzanog doba.

Na lokaciji Brdo nad Crkvinom tokom 2014. godine izvršeno je iskopavanje najvećeg tumula na nekropoli. Tumul je formiran od zemlje i kamena, bez tragova bilo kakve kamene konstrukcije. Zanimljivo da je prirodno uzvišeni teren odabran za formiranje tumula, jer je davao izgled monumentalnosti. Pod gornjim slojem tumula, gotovo u njegovom središtu, pronađen je dio ljudske mandibule i manji fragmenti ljudskih kostiju. Ostaci su bili koncentrisani zajedno s ulomcima keramike i životinjskih kostiju. Koncentracija nalaza pokazuje da nije riječ o standardnom ili normativnom pokopu, sličan onima koji su se nalazili u drugim iskopanim tumulima u Glasincu. Nije bilo tragova kremiranja na kostima, ali ne možemo potvrditi ni inhumiranje, jer kosti nisu bile u anatomskom položaju. Nadalje, ne znamo je li pokojnik bio smješten u neku vrstu grobne jame. Fragmenti keramike i životinjskih kostiju također su bili koncentrisani u ovom središnjem dijelu tumula. Zbog fragmentacije, nemoguće je tačno rekonstruirati oblik keramičkih posuda. Na temelju sastava i malih detalja u dizajnu, možemo potvrditi da se radi o praistorijskim nalazima, najvjerovatnije pehara s dvije ručke i nekoliko zdjela sa zasječenim rubovima.

Većina keramike sakupljena sa Gradca na Sokocu sadrži ulomke ručki i oboda koji pripadaju različitim vrstama zdjela i pehara. Među hronološkim dijagnostičkim objektima nalazimo velike zaobljene ručke s perforacijom. Ručke istog tipa pronađene su i na gradini Kusače. Keramika ovoga tipa bila je vrlo popularna od kraja srednjeg bronzanog doba i tokom kasnog bronzanog doba. U njegovoj revidiranoj hronologiji, B. Čović materijal sa Kusača datuje u Glasinac IIIa-b fazu, iako je mogao obuhvatiti i sve faze kasnog bronzanog doba.

Arheološka zbirka Muzeja franjevačkog samostana u Tolisi posjeduje zanimljiv nalaz s područja istočne Bosne. Bronzana fibula iz okoline Čajniča je slučajni nalaz poklonjen samostanu od nepoznatog donatora. Fibula pripada raširenoj vrsti fibula tip Rusanovići, prema tipologiji B. Teržan. Fibule tipa Rusa-

novići najvjerovatnije nastaju prema modelima fibula sa prostora jugoistočnih alpi poput tzv. Šmarjeta tip fibula. Na Glasincu, međutim, dobile su razne inovativne forme, te su postali dio prepoznatljive lokalne nošnje. Komparativni primjerci za ove vrste fibula su brojne, osobito na glasinačkom području, ali one se također pojavljuju i u susjednim regijama zapadne Srbije i Kosova. Fibule tipa Rusanovići dolaze u parovima ili pojedinačno, kao i u kombinaciji s drugim vrstama istovremenih fibula.

Jedan od rijetkih predmeta koji je dolazio sa Glasinca u zadnjih nekoliko desetljeća je fibula sa nalazišta Pećina pod lipom, u blizini mjesta Kadića brda. Pećina pod lipom prvenstveno je poznata kao kompleksno paleolitsko nalazište, ali i lokalitet sa kulturnim slojem iz kasnijih praistorijskih i istorijskih razdoblja. Bronzana fibula pronađena je tokom arheološkog iskopavanja 2015. godine u dijelu lokaliteta pod nazivom Abri II. Fibula spada u skupinu bronzanih samostrelnih Certosa tip fibula, varijanta XIII, prema tipologiji B. Teržan. Najbliža analogija tipa XIII fibule je dokumentirana na Čavarinama (tumuli II i IV) u Glasincu, datiranoj Glasinac Va faza. Ova vrsta fibula pokazuje kulturne veze između područja Glasinca, sjeverne Bosne i Slavonije s istočno alpskim, Transdunubijskim i Podunavskim kulturnim krugovima, nesumnjivo duž tzv. Posavinskog koridora. Ove fibule su specifičnije za područje kulturnog kompleksa Donja Dolina - Sanski Most, gdje su često otkriveni kao dio grobnih cjelina iz faze 3b (druga polovica 5-4. stoljeća prije n.e.).

## Bibliography

- Babić, S.* 2002, 'Princely graves' of the Central Balkans – critical history of research, *Journal of European archaeology* V (1), Cambridge 2002, 70–88.
- Булић, Д. 2016, Археолошка истраживања локалитета Гробљице у Косјерићу, *Гласник Српског археолошког друштва* 32, Beograd 2016, 183–199.
- Benac, A. / Čović, B.* 1956, Glasinac I – Bronzano doba, *Zemaljski muzej, Sarajevo* 1956.
- Benac, A. / Čović, B.* 1957, Glasinac II – Željezno doba, *Zemaljski muzej, Sarajevo* 1957.
- Benac, A.* 1963, Gradac Ilinjača kod Kotorca, *Prilozi za proučavanje istorije Sarajeva I*, Sarajevo 1963, 25–32.
- Blečić Kavur, M. / Pravidur, A.* 2012, Ilirske kacige s područja Bosne i Hercegovine, *Glasnik Zemaljskog muzeja u Sarajevu* 53, Sarajevo 2012, 35–122.
- Blečić Kavur, M.* 2012, Ukrašene brončane falere s trnom: ornament kao amblem, *Godišnjak Cen-*



- tra za balkanološka ispitivanja 41, Sarajevo 2012, 43–66.
- Čović, B. 1956, Ilirska nekropola u Čarakovu, Glasnik Zemaljskog muzeja u Sarajevu, 11 (n. s.), Sarajevo 1956, 187–204.
- Čović, B. 1959, Glasinac 1957. Rezultati revizionog iskopavanja tumula glasinačkog tipa, Glasnik Zemaljskog muzeja u Sarajevu XIV (n. s.), Sarajevo 1959, 53–85.
- Čović, B. 1965a, Novi nalazi sa nekropole “Gradac” u Sokocu i neka pitanja glasinačke hronologije, Članci i građa za kulturnu istoriju istočne Bosne VI, Tuzla 1965, 57–80.
- Čović, B. 1965b, Uvod u stratigrafiju i hronologiju praistorijskih gradina u Bosni, Glasnik Zemaljskog muzeja u Sarajevu XX (n. s.), Sarajevo 1965b, 27–145.
- Čović, B. 1987a, Grupa Donja Dolina – Sanski Most, In: Praistorija jugoslavenskih zemalja V, Sarajevo 1987, 232–286.
- Čović, B. 1987b, Glasinačka kultura, In: Praistorija jugoslavenskih zemalja V, Sarajevo 1987, 575–643.
- Čović, B. 1987c, Srednjodalmatinska grupa, In: Praistorija jugoslavenskih zemalja V, Sarajevo 1987, 442–481.
- Čović, B. 1984, Bakreno, bronzano i željezno doba, In: Anđelić, P. / Bojanovski, I. / Čović, B. / Marijanović, B. (ed.), Visoko i okolina kroz historiju 1, Visoko 1984.
- Čović, B. 1983b, Prelazna zona, In: Praistorija jugoslavenskih zemalja IV, Sarajevo 1983, 390–421.
- Čović, B. 1983c, Glasinačka kulturna grupa, In: Praistorija jugoslavenskih zemalja IV, Sarajevo 1983, 413–433.
- Čurčić, V. 1908, Prehistoričke utvrde oko Sarajeva, Glasnik Zemaljskog muzeja u Sarajevu XX (s. s.), Sarajevo 1908, 363–386.
- Dizdar, M. 2015, Late Hallstatt female grave from Belišće – group of Late Hallstatt finds in the Lower Drava Valley, In: Gutjahr, C. / Tiefengraber, G. (ed.), Beiträge zur Hallstattzeit am Rande der Südostalpen, Verlag Marie Leidorf, Rahden/Westf. 2015.
- Fiala, F. 1892, Rezultati prehistoričkog ispitivanja na Glasincu u ljetu 1892, Glasnik Zemaljskog muzeja u Sarajevu IV (s. s.), Sarajevo 1892, 389–444.
- Fiala, F. 1894, Jedna prehistorička naseobina na Debelom brdu kod Sarajeva, Glasnik Zemaljskog muzeja u Sarajevu VI (s. s.), Sarajevo 1894, 107–140.
- Fiala, F. 1895, Rezultati pretraživanja prehistoričkih gromila na Glasincu godine 1895., Glasnik Zemaljskog muzeja u Sarajevu VII (s. s.), Sarajevo 1895, 533–565.
- Гарашанин, Д. 1967, Ражана, Крива Река и Гласиначки комплекс, Зборник Народног музеја В, Београд 1967, 41–50.
- Gavranović, M. 2011, Die Spätbronze- und Früheisenzeit in Bosnien, Bonn 2011.
- Govedarica, B. 1978, Novi arheološki prilozi istraživanju tumula na glasinačkom području, Godišnjak Centra za balkanološka ispitivanja 18, Sarajevo 1978, 15–36.
- Govedarica, B. 1982, Prilozi kulturnoj stratigrafiji praistorijskih gradinskih naselja u jugozapadnoj Bosni, Godišnjak Centra za balkanološka ispitivanja 20/18, Sarajevo 1982, 111–188.
- Govedarica, B. 1985, O istraživanju glasinačkih gradina, Materijali Saveza arheoloških društva Jugoslavije XX, Beograd 1985, 15–27.
- Govedarica, B. 1990, Klisura / Kadića Brdo, Prehistoric Hillfort, Arheološki Pregled 29, Ljubljana 1990, 85–88.
- Говедарица, Б. / Бабић, С. 1992, Методологија истраживања градинског насеља Клисура у Кадића Брду, Гласник Српског археолошког друштва 8, Београд 1967, 53–63.
- Greenfeld, H. 2005, The zooarchaeological remains from Early Iron Age hill-top fortress at Klisura-Kadića Brdo, Eastern Bosnia: a taphonomic assessment, Godišnjak Centra za balkanološka ispitivanja 32, Sarajevo 2005, 84–107.
- Heilmann, D. 2016, Contextualising bow fibulae with Boeotian shield plates: cultural transfer processes during Early Iron Age, Старинар LXVI, Београд 2016, 9–26.
- Horejs, B. 2010, Possibilities and limitations in analysing ceramic wares, In: Horejs, B. / Jung, R. / Pavúk, P. (eds.), Analysing pottery: processing, classification, publication, Bratislava 2010.
- Jašarević, A. 2017, Zaboravljeni grobovi iz Donje Doline, Glasnik Zemaljskog muzeja u Sarajevu 54 (n. s.), Sarajevo 2017, 7–30.
- Jašarević, A. 2015, Imported bronze vessels from Glasinac: long-distance exchange with Pre-Roman Italy and Greece, In: Deschler-Erb, E. / Della Casa P. (eds.), New research on ancient bronzes, Acta of the XVIIIth international congress on ancient bronzes, Zurich studies in archaeology, Vol. 10, Zurich 2015, 39–42.
- Jerem, E. 1968, The Late Iron Age cemetery of Szentlőrinc, Acta Archaeologica Academiae Scientiarum Hungaricae 20, Budapest 1968, 159–208.
- Коледин, Ј. 2012, О једном новијем налазу из гвозденог доба у Срему, Старинар LXII, Београд 2012, 107–112.
- Korošec, J. 1940, Bericht über bisher unveröf entlichen, vorgeschichtlichen Funde auf der Gradina “Gradac” bei Kotorac, Glasnik Zemaljskog muzeja u Sarajevu LII (s. s.), Sarajevo 1940, 77–81.
- Kosorić, M. 1983, Praistorijsko naselje Gradina u Sovićima kod Šekovića, Glasnik Zemaljskog muzeja u Sarajevu 38 (n. s.), Sarajevo 1983, 73–94.

- Косорић, М. 1994, Насеље и хумке на локалитету Градина у Крећи – Горње Подриње, Зборник за историју БиХ 1, Београд 1994, 5–20.
- Kučan, D.* 1995, Ein Beitrag zur Geschichte der Kulturpflanzen in Bosnien mit neuen Funden aus der früheisenzeitlichen Wallburg Klisura Kadića Brdo bei Sokolac, Probleme der Küstenforschung im südlichen Nordseegebiet 23, Oldenburg 1995, 153–173.
- Kujundžić-Vejzagić, Z.* 2001, Pećina Pod lipom – paleolitsko stanište na Glasinačkoj visoravni, Glasnik Zemaljskog muzeja u Sarajevu 48/49 (n. s.), Sarajevo 2001, 33–89.
- Lucentini, N.* 1981, Sulla cronologia della necropoli di Glasinac nell'eta del ferro, Studi di protostoria adriatica 1, Quaderni di cultura materiale 2, Roma 1981.
- Marić, Z.* 1964, Donja Dolina, Glasnik Zemaljskog muzeja u Sarajevu 19 (n. s.), Sarajevo 1964, 5–83.
- Marijan, B.* 1995, Naselje brončanog doba u Prispu kod Livna, Opuscula archaeologica 19, Zagreb 1995, 39–49.
- Srejović, D.* 1973, Karagač and the problem of the ethnogenesis of the Dardanians, Balcanica IV, Beograd 1973, 39–89.
- Стратимировић, Ђ. 1891, Опис поља Гласинац, Glasnik Zemaljskog muzeja u Sarajevu III (s. s.), Sarajevo 1891, 323–334.
- Teržan, B.* 1976, Čertoška fibula, Arheološki vestnik 27, Ljubljana 1976, 317–443.
- Teržan, B.* 1987, The Early Iron Age chronology of the Central Balkans, Archaeologia Iugoslavica XXIV, Beograd 1987, 7–27.
- Teržan, B.* 1995, Handel und soziale Oberschichten im früheisenzeitlichen Südosteuropa, In: Hänsel, B. (eds.), Handel, Tausch und Verkehr im bronze- und früheisenzeitlichen Südosteuropa, Südosteuropa-Schr. 17, Prähist. Arch. Südosteuropa 11, München/Berlin 1995, 81–160.
- Truhelka, Č.* 1889, Gromila na Glasincu, Glasnik Zemaljskog muzeja u Sarajevu I (s. s.), Sarajevo 1889, 23–35.
- Truhelka, Č.* 1891, Prehistorička gradina na Glasincu, Glasnik Zemaljskog muzeja u Sarajevu III (s. s.), Sarajevo 1891, 307–315.
- Vasić, R.* 1989, Jedan prilog proučavanju sremske grupe, Godišnjak Centra za balkanološka ispitivanja 25, Sarajevo 1989, 103–113.
- Vasić, R.* 1999, Die Fibeln im Zentralbalkan, PBF XIV/12, Stuttgart 1999.
- Васић, Р. 2003, Белешке о Гласинцу – хронолошка и територијална питања, Balcanica XXXII–XXXIII, Београд 2003, 7–36.
- Васић, Р. 2004, Белешке о Гласинцу – Аутаријати, Balcanica XXXV, Београд 2004, 7–36.
- Zotović, M.* 1985, Arheološki i etnički problemi bronзаног i gvozdenog doba западне Србије, Savez arheoloških društava Jugoslavije, Beograd 1985.

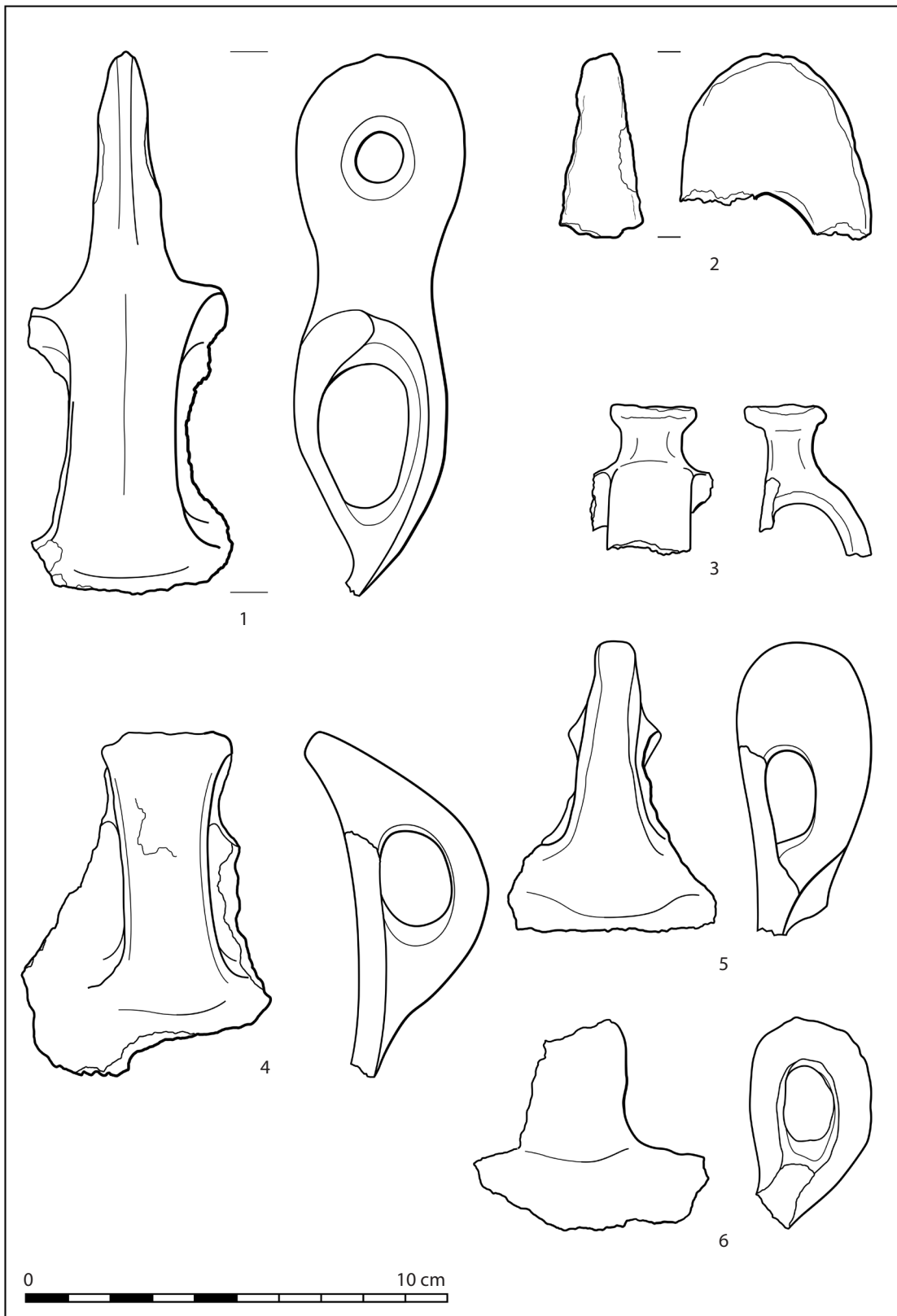


Table I: Pottery fragments from Gradac, Sokolac

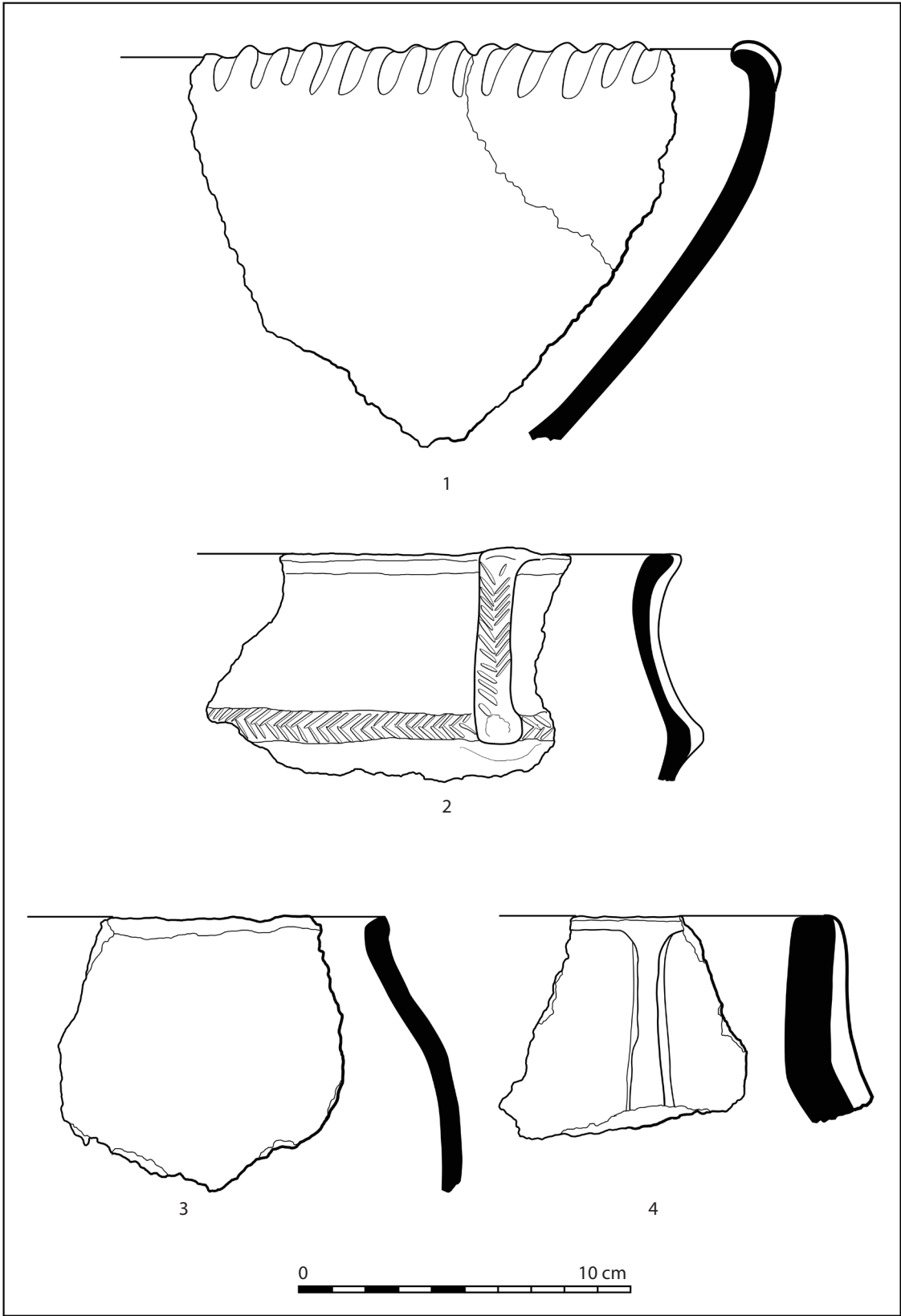


Table II: Pottery fragments from Gradac, Sokolac

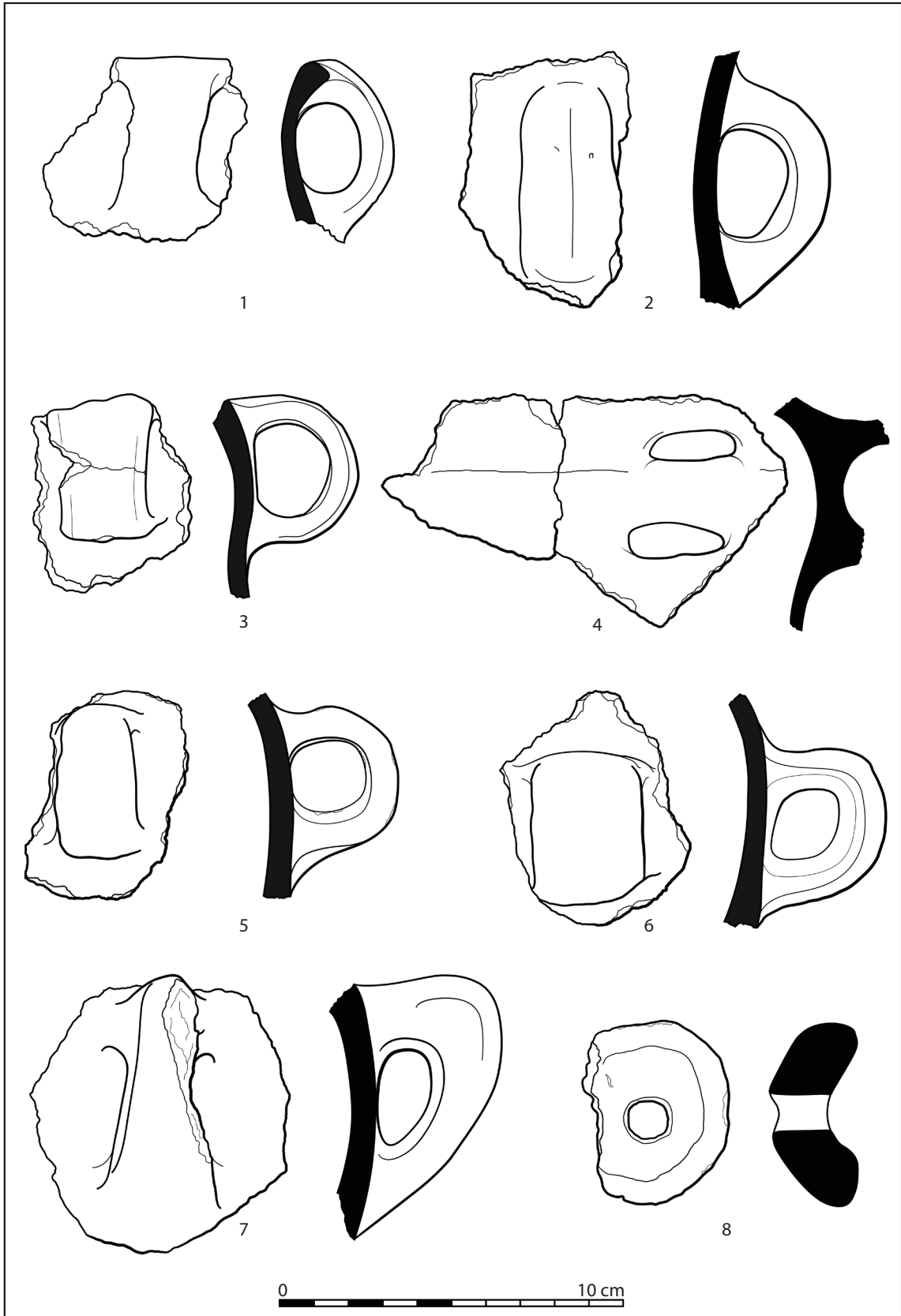


Table III: Pottery fragments from Gradac, Sokolac